



Improved Seals and Pin Retention System (BPR₂) D8, D9 and D10 class dozer

BPR₂ – Berco Pin Retention 2

Main features:

- Completely new and improved seals, designed by Berco with materials suitable for an extended working temperature range and improved wear performance when coupled with the bushing ends;
- New pin retention system to ensure all joints are sealed to predetermined end-play specification;
- Optimized pin – link interference;
- Improved bushing I. D. geometry and surface finish;
- Full interchangeability with OEM parts also at subcomponent level.

Main benefits:

- Longer joint life;
- Improved serviceability & easy maintenance;
- Ultimately, significantly improved total cost/hour.

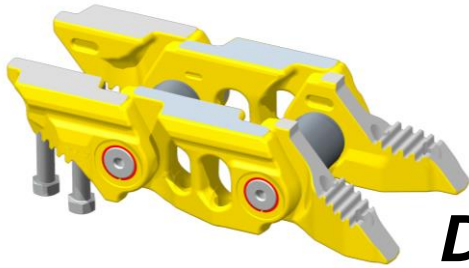


PRODUCT BULLETIN

IMPROVEMENTS

➤ Number 44 – April 13th, 2015

Interchangeability



D8 N-R-T (MS, ES)

Pn.OEM	PN.BERCO	Description	Qty
272-6009	CR7603/44	Link Assembly	1
8E-4513	CR7604	RH Regular	43
8E-4514	CR7605	LH Regular	43
8E-4061*	CR7619	RH Split master Link	1
8E-4457*			
8E-4062*	CR7620	LH Split master Link	1
8E-4458*			
239-7943	CR7529	Seal Assembly	88
360-2308	CR6177	Thrust Ring	88
7G-4332	CR3688	Stopper	44
6Y-0473	CR3685A	Plug	44
6Y-3914	CR5854	Bushing	44
7T-7054	CR7608	Pin	44
6V-1725	CR4133	Master Bolt (Long)	2
6V-1724	CR4132	Master Bolt (Short)	2
6Y-0469	CR7609	Retaining Ring (BPR2)	88

* Interchangeable only as complete master link

Track group assembly:

Track group ass'y with Moderate Service shoes	CR7602/44/22
Track group ass'y with Extreme Service shoes	CR7653/44/22

Optional Equipment

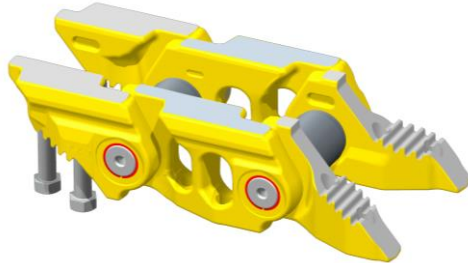
Shoes length can be 22", 24", 26", 28", 32", 38" with or without open center



PRODUCT BULLETIN

IMPROVEMENTS

➤ Number 44 – April 13th, 2015



D8 N-R-T (MS, ES)

Pn.OEM	PN.BERCO	Description	Qty
	CR7649/44	Link Assembly	1
8E-4513	CR7604	RH Regular	43
8E-4514	CR7605	LH Regular	43
8E-4061*	CR7619	RH Split master Link	1
8E-4457*			
8E-4062*	CR7620	LH Split master Link	1
8E-4458*			
239-7943	CR7529	Seal Assembly	88
360-2308	CR6177	Thrust Ring	88
7G-4332	CR3688	Stopper	44
6Y-0473	CR3685A	Plug	44
6Y-3914	CR5854	Bushing	44
7T-7054	CR7608	Pin	44
	LH1092	Master Bolt (Long)	2
6V-1724	CR4132	Master Bolt (Short)	2
6Y-0469	CR7609	Retaining Ring (BPR2)	88

* Interchangeable only as complete master link

CR7649/44 is like CR7603/44, but with longer master bolt for SES master shoe

Track group assembly:

Track group ass'y with Super Extreme Service shoes CR7655/44/22

Optional Equipment

Shoes length can be 22", 24", 26", 28", 32", 38" with or without open center

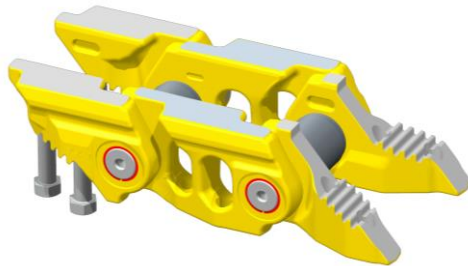


PRODUCT BULLETIN



IMPROVEMENTS

➤ Number 44 – April 13th, 2015



D9 N-R-T (ES,SES)

Pn.OEM	PN.BERCO	Description	Qty
199-5525	CR7611/43	Link Assembly	1
7T-2275	CR7612	RH Regular	42
7T-2276	CR7613	LH Regular	42
250-4245*	CR7621	RH Split master Link	1
250-4247*			
250-4246*	CR7622	LH Split master Link	1
250-4248*			
207-0545	CR7306	Seal Assembly	86
352-9707	CR6226	Thrust Ring	86
7G-4332	CR3688	Stopper	43
6Y-0473	CR3685A	Plug	43
186-0781	CR6478	Bushing	43
186-0780	CR7616	Pin	43
6V-1728	CR3859	Master Bolt (Long)	2
7T-2283	CR4669	Master Bolt (Short)	2
6Y-0470	CR7617	Retaining Ring (BPR2)	86

* Interchangeable only as complete master link

Track group assembly:

Track group ass'y with Extreme Service shoes	CR7610/43/22
Track group ass'y with Extreme Service shoes, Open Center	CR7659/43/22
Track group ass'y with Super Extreme Service shoes	CR7661/43/22

Optional Equipment

Shoes length can be 22", 24", 27", 30" with or without open center

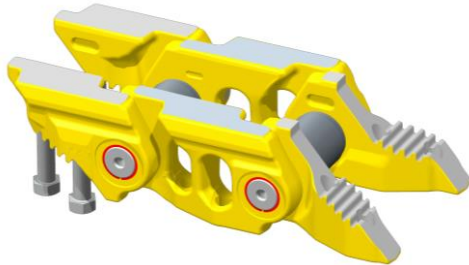


PRODUCT BULLETIN



IMPROVEMENTS

➤ Number 44 – April 13th, 2015



D10 N-R-T (ES,SES)

Pn.OEM	PN.BERCO	Description	Qty
238-9851	CR7663/44	Link Assembly	1
7T-0715	CR7669	RH Regular	43
7T-0716	CR7670	LH Regular	43
290-7311*	CR7673	RH Split master Link	1
234-6943*			
290-7312*	CR7674	LH Split master Link	1
234-6944*			
6Y-2057	CR6503A	Bushing	44
222-7001	CR7353	Seal Assembly	88
352-9703	CR6179	Thrust Ring	88
7G-4332	CR3688	Stopper	44
6Y-0473	CR3685A	Plug	44
6Y-1579	CR7573	Pin	44
7T-0998	CR5257	Master Bolt (Long)	2
7T-0999	CR5258	Master Bolt (Short)	2
6Y-0471	CR6137A	Retaining Ring (BPR2)	88
252-6327	CR7356	Seal Assembly PTS (Use only with 7T-0715 and 7T-0716) links and corresponding master link	88

* Interchangeable only as complete master link

Track group assembly:

Track group ass'y with Extreme Service shoes	CR7665/44/24
Track group ass'y with Super Extreme Service shoes	CR7667/44/24

Optional Equipment

Shoes length can be 24", 28", 30" with or without open center



Wear performance:

The well-known and customer appreciated wear performance of the corresponding Berco products currently in the market does not change in these new products. Therefore, the current wear tables may be used also for wear life evaluation of the new chains.

Maintenance:

The new chains require specific tooling sets that have been developed by Berco for the stationary presses PT350.

A01A36775 - Complete Tooling for D 8 Chain with BPR₂ for PT350 press



- A01A36776 – Right hand side assembly plate
- A01A36777 – Left hand side assembly plate
- A01A36778 – Movable rest insert
- A01A36779 – Punch plate holder
- A01A36780 – Pin mounting punch
- A01A36481 – Bushing mounting punch
- A01A36782 – Pin
- A01A36783 – BPR₂ assembly punch
- A01A36784 – Centering punch
- A01A36785 – Ring assembly punch

A01A36764 - Complete Tooling for D 9 Chain with BPR₂ for PT350 press

- A01A36765 – Right hand side assembly plate
- A01A36766 – Left hand side assembly plate
- A01A36767 – Movable rest insert
- A01A36768 – Punch plate holder
- A01A36769 – Pin mounting punch
- A01A36770 – Bushing mounting punch
- A01A36771 – Pin
- A01A36772 – BPR₂ assembly punch
- A01A36773 – Centering punch
- A01A36774 – Ring assembly punch

A01A36743 - Complete Tooling for D10 Chain with BPR₂ for PT350 press

- A01A36744 – Right hand side assembly plate
- A01A36752 – Left hand side assembly plate
- A01A36753 – Movable rest insert
- A01A36745 – Punch plate holder
- A01A36746 – Pin mounting punch
- A01A36474 – Bushing mounting punch
- A01A36751 – Pin
- A01A36749 – BPR₂ assembly punch
- A01A36750 – Centering punch
- A01A36748 – Ring assembly punch