



July 2019

New track group

D375A-5-6-8 class dozer, improved with Berco Pin Retention System (BPR2™)

Maintaining its commitment to product performance and continuous improvement, Berco has just made available new BPR2™ chain for the D375A-5-6-8 class dozer – increasing its performance in high-impact applications even further. On top of this significant enhancement, this chain is assembled with Berco proprietary and exclusive Digital Assembling technology granting ideal nominal housing conditions and uniform wear of all chain components. All of it to make sure Berco products always deliver the lowest maintenance costs and the best cost per hour.

Features

- new pin retention system to ensure all joints are sealed to predetermined end-play specification
- optimized pin – link interference
- Berco Digital Assembling

Advantages

- extended joint life up to 30% more, compared to chain without BPR2™
- improved serviceability & easy maintenance
- significantly reduced total cost/hour

Berco Sales Department

Berco S.p.A.
Via 1° Maggio, 237
44034 Copparo

www.thyssenkrupp-berco.com



A thyssenkrupp brand

Part numbers information

Former PN	New PN	Description
KM3599D 40	KM5134A-040	LINK ASSEMBLY, LUBRICATED, WITH PIN RETENTION SYSTEM IN ALL JOINTS (BPR2), 40 SECT.
KM3599D 41	KM5134A-041	LINK ASSEMBLY, LUBRICATED, WITH PIN RETENTION SYSTEM IN ALL JOINTS (BPR2), 41 SECT.
KM3600E 40 610	KM5135A-0400610	TRACK GROUP, LUBRICATED, FOR ALL USES (LOW AND HIGH TEMPERATURE), WITH PIN RETENTION SYSTEM IN ALL JOINTS (BPR2), SINGLE GROUSER SHOES, 40 SECT., 610MM, M30
KM3600E 40 710	KM5135A-0400710	TRACK GROUP, LUBRICATED, FOR ALL USES (LOW AND HIGH TEMPERATURE), WITH PIN RETENTION SYSTEM IN ALL JOINTS (BPR2), SINGLE GROUSER SHOES, 40 SECT., 710MM, M30
KM3600E 40 810	KM5135A-0400810	TRACK GROUP, LUBRICATED, FOR ALL USES (LOW AND HIGH TEMPERATURE), WITH PIN RETENTION SYSTEM IN ALL JOINTS (BPR2), SINGLE GROUSER SHOES, 40 SECT., 810MM, M30
KM3600E 41 610	KM5135A-0410610	TRACK GROUP, LUBRICATED, FOR ALL USES (LOW AND HIGH TEMPERATURE), WITH PIN RETENTION SYSTEM IN ALL JOINTS (BPR2), SINGLE GROUSER SHOES, 41 SECT., 610MM, M30
KM3600E 41 710	KM5135A-0410710	TRACK GROUP, LUBRICATED, FOR ALL USES (LOW AND HIGH TEMPERATURE), WITH PIN RETENTION SYSTEM IN ALL JOINTS (BPR2), SINGLE GROUSER SHOES, 41 SECT., 710MM, M30
KM3600E 41 810	KM5135A-0410810	TRACK GROUP, LUBRICATED, FOR ALL USES (LOW AND HIGH TEMPERATURE), WITH PIN RETENTION SYSTEM IN ALL JOINTS (BPR2), SINGLE GROUSER SHOES, 41 SECT., 810MM, M30
	KTPB0020A41	PIN & BUSHING GROUP FOR LUBRICATED LINK ASSEMBLY, 41 SECT.

Machine model applications

Berco PN	OEM PN	Model	s/n
KM5134A-041	195-32-00660 195-32-00661	D375A-5 W/O EGR (8 TRACK ROLLER)	from 55001 onwards
		D375A-6	from 60001 onwards
		D375A-8	from 80001 onwards
KM5134A-040	195-32-00590 195-32-00591 195-32-00592 195-32-00622	D375A-5 W/O EGR (7 TRACK ROLLER)	from 55001 onwards
		D375A-6R	from 65001 onwards
		D375A-5	from 18001 onwards

BPR2™

This system is designed for high-impact and high-load applications such as mining, heavy construction, demolition, and waste disposal. Its purpose is to mechanically lock the link to the pin, in order to avoid end-play generation and pin walking.

Digital Assembling

The new Berco Digital Assembling system guarantees a perfect lubricated track chain. Specific assembly parameters are loaded into the system, then an algorithm establishes optimized parameters for the track chain section to be assembled. In this way, there is no more risk of a too loose chain with oil leakage problems or of a too tight chain that generates overheating issues and damage on link and spacer.

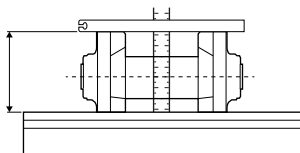
With the optimized setup we create ideal nominal housing conditions, as a result we have a very high quality product with uniform wear of its parts, reducing maintenance costs.



Berco Sales Department

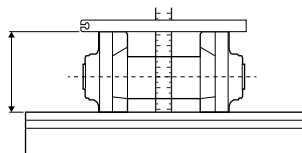
Wear limits of link, bushing and shoes

Track link with strut
Normal impact
KM5136A - KM5137A



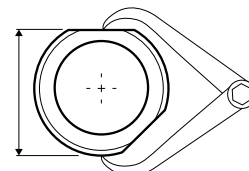
Wear	mm	in
New	181.00	7.126
10%	179.20	7.055
20%	177.40	6.984
30%	175.60	6.913
40%	173.80	6.843
50%	172.00	6.772
60%	170.20	6.701
70%	168.40	6.630
80%	166.60	6.559
90%	164.80	6.488
100%	163.00	6.417
110%	161.20	6.346
120%	159.40	6.276

Track link with strut
High impact
KM5136A - KM5137A



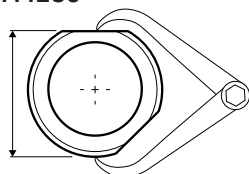
Wear	mm	in
New	181.00	7.126
10%	180.00	7.087
20%	179.00	7.047
30%	178.00	7.008
40%	177.00	6.969
50%	176.00	6.929
60%	175.00	6.890
70%	173.80	6.843
80%	172.10	6.776
90%	170.50	6.713
100%	169.00	6.654
110%	167.50	6.594
120%	166.00	6.535

Lubricated track chain
bushings
Normal impact
KM4285



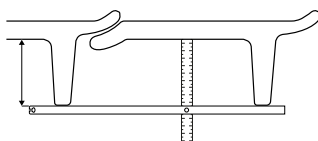
Wear	mm	in
New	98.00	3.858
10%	97.20	3.827
20%	96.30	3.791
30%	95.40	3.756
40%	94.60	3.724
50%	93.70	3.689
60%	92.90	3.657
70%	92.10	3.626
80%	91.10	3.587
90%	90.40	3.559
100%	89.50	3.524
110%	88.70	3.492
120%	87.80	3.457

Lubricated track chain
bushings with conicity
High impact
KM4285



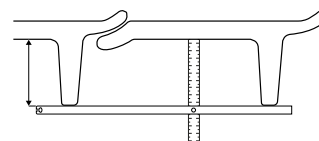
Wear	mm	in
New	98.00	3.858
10%	97.40	3.835
20%	96.80	3.811
30%	96.20	3.787
40%	95.60	3.764
50%	95.00	3.740
60%	94.50	3.720
70%	93.80	3.693
80%	93.20	3.669
90%	92.60	3.646
100%	92.00	3.622
110%	91.40	3.598
120%	90.80	3.575

Shoe, single grouser, regular
Normal impact
KM4919



Wear	mm	in
New	93.00	3.661
10%	86.70	3.413
20%	80.40	3.165
30%	74.10	2.917
40%	67.80	2.669
50%	61.50	2.421
60%	55.20	2.173
70%	48.90	1.925
80%	42.60	1.677
90%	36.30	1.429
100%	30.00	1.181
110%	23.70	0.933
120%	17.40	0.685

Shoe, single grouser, regular
High impact
KM4919



Wear	mm	in
New	93.00	3.661
10%	88.20	3.472
20%	82.90	3.264
30%	78.10	3.075
40%	72.80	2.866
50%	68.00	2.677
60%	62.70	2.469
70%	56.90	2.240
80%	51.60	2.031
90%	47.30	1.862
100%	42.50	1.673
110%	39.70	1.563
120%	34.90	1.374

